

# HEATHY WOOD NEWSLETTER

## OCTOBER 2023



### WELCOME

This community newsletter is designed to keep you updated on progress as the various phases of the project are brought forward. Information can also be found on the website: [www.heathywood.co.uk](http://www.heathywood.co.uk)

### IN THIS ISSUE

- Play area
- Travel survey
- School and GP Surgery
- Footpaths update

### PLAY AREA PLANS

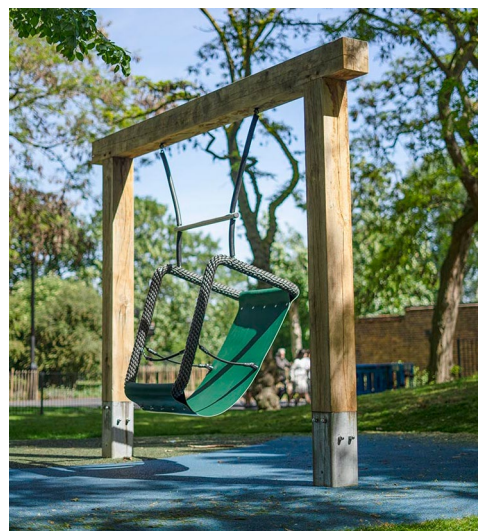
With so many families in Heathy Wood, we are planning a new play area at the north of the site. Works are scheduled to start next year, and the architects are putting together plans of the different elements and equipment that are to be included.

Equipment will include:

- Climbing structure
- Spinning disk
- Tyre swing
- Pyramid tower and tunnel slide

- Toddler swing and accessible swing
- Jumping disks
- Timber hut with slide
- Table tennis table
- Pre-cast concrete scooter features

Most of the proposed facilities will be sourced from local company Duncan & Grove who are just 3 miles away close to Crawley Down. We will be in touch to hear your thoughts on the plans once they are completed.







## TRAVEL SURVEY

This autumn we are conducting travel surveys across Heathy Wood!

Please scan the QR code or click on the link to complete our questionnaire for a chance to win a £50 Halfords voucher! Your feedback will inform the Travel Plan monitoring and help us understand your travel needs and requirements so that we can tailor future travel initiatives for your community. We appreciate your feedback and participation.

[www.surveymonkey.co.uk/r/HeathyWoodResidentsQuestionnaire](http://www.surveymonkey.co.uk/r/HeathyWoodResidentsQuestionnaire)

If you have any questions about the Travel Plan or surveys, please contact the Heathy Wood Travel Plan Coordinator, at [HeathyWoodTPC@stantec.com](mailto:HeathyWoodTPC@stantec.com)

## PRIMARY SCHOOL SITE UPDATE

Many residents have raised the issue regarding the allocation of a new primary school in the area, and there has always been a site dedicated in the Heathy Wood plans for a potential school in the development. This decision lies with the West Sussex County Council who are scheduling to provide an update on progress by the end of this year.

Air and noise surveys have been undertaken regarding the suitability of the site for a school which we understand have been positive. However, the Council is still assessing future roll numbers of pupils over the coming years, to determine the appropriate level of new schooling required in the area.

St. Modwen is very keen to welcome a school to Heathy Wood and the allocated site continues to remain available until the County Council confirms its approach.

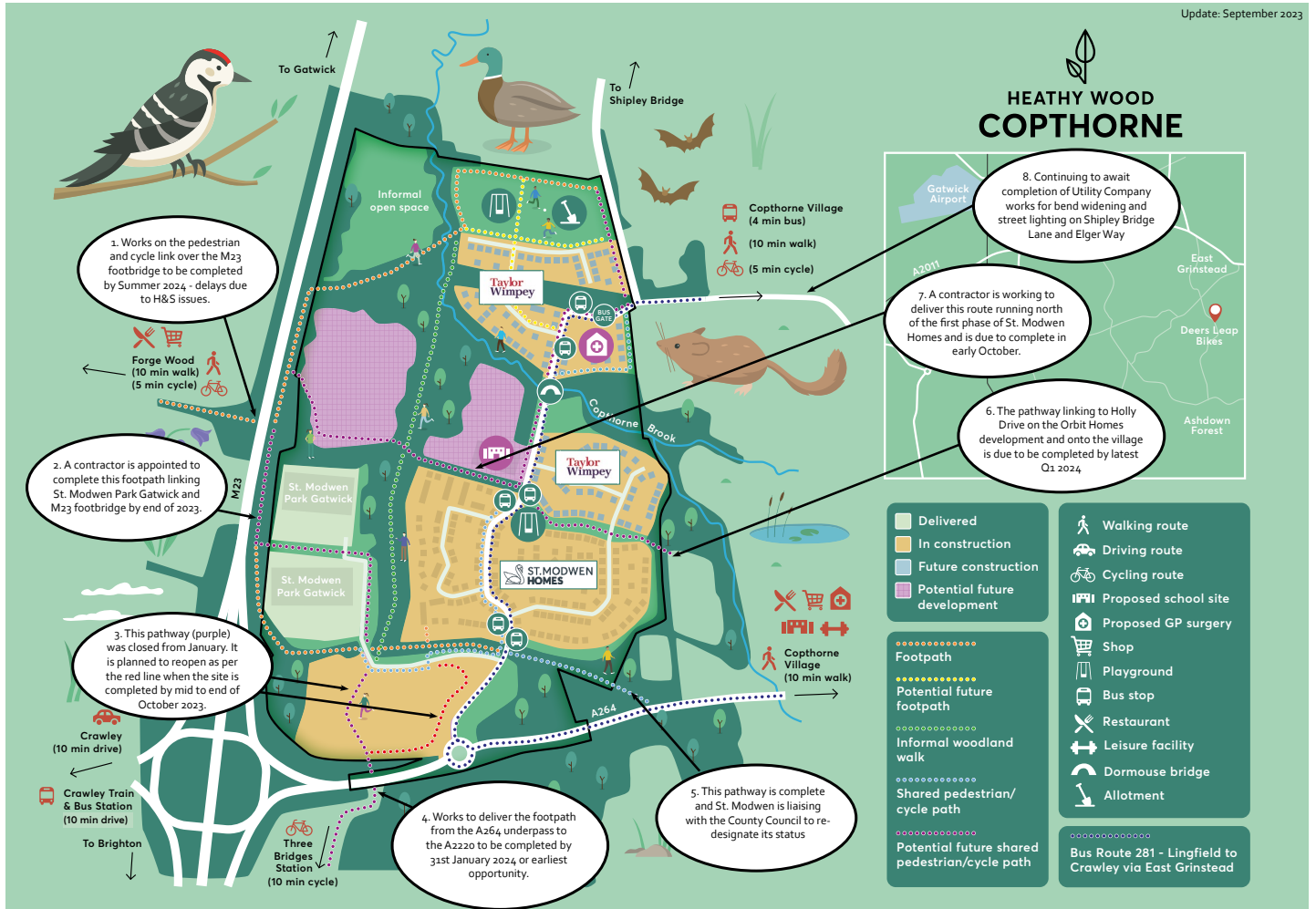


## THE GP SURGERY

St. Modwen Developments is continuing to work together with the Pound Hill GP Surgery team regarding the relocation of the surgery to a site, which has been allocated in Heathy Wood. With the donation of the land and a financial contribution from St. Modwen, the new surgery was then planned to be jointly funded by the NHS and the Practice itself, which was a viable approach at the time. The changing economic climate has had an impact and pushed overall costs up by over 60% and, with funding in the NHS currently challenging, this shortfall is too high at present to be viable. The situation continues to be under review with the NHS, but currently it is unlikely there will be a decision before next year.



## PATHWAYS UPDATE



There's a lot that goes into building a new community, and part of that is ensuring that the infrastructure is there to support and sustain it. The map above provides information about the status of each of the footpaths and cycleways being provided.

Improvements to the cycle and pedestrian link over the M23 footbridge are scheduled to be completed by Summer 2024, as they have been delayed due to health and safety issues regarding the Motorway. However, the footpaths linking St. Modwen Park Gatwick to the M23 footbridge are due to complete by the end of this year.

The footpath that has been moved due to works on L1 is planned to reopen by the end of October 2023.

Works to the footpath from the A264 underpass to the main road will also be completed by the end of January 2024.

The works to widen the bend and install street lighting on Shipley Bridge Way are awaiting the completion of utility works, and will be finished as soon as possible post completion.

St. Modwen is building links throughout Heathy Wood and the surrounding area to ensure that this is a truly connected community. Take a look at the map to see the progress of these footpaths and cycleways, and to view a larger version of the map head to: <https://www.heathywood.co.uk/wp-content/uploads/2023/01/heathy-wood-map.pdf>

## SHARE YOUR STORY

Stories help to fill the gap between us. We would love to share good news about Heathy Wood and its

surrounding community, so if you have your own story to tell, contact us on [info@heathywood.co.uk](mailto:info@heathywood.co.uk).