

HEATHY WOOD NEWSLETTER

NOVEMBER 2022



WELCOME

This community newsletter is designed to keep you updated on progress as the various phases of the project are brought forward. Information can also be found on the website: www.heathywood.co.uk

IN THIS ISSUE

- Development update
- Progress in photos
- Travel update
- Christmas Carols and Lights December 8th

DEVELOPMENT UPDATE

Construction at Heathy Wood continues to build to schedule and further infrastructure works are underway to connect this new community to its neighbours.

With the new bus route up and running through the site, residents can now easily travel into Copthorne and connect to the surrounding villages. The footpath across the middle field has now received consent and works are due to start with St. Modwen working on the delivery programme.

The planning application for the L1 plot on the left to the entrance of the site was approved in September. Permission has been granted for a building falling within Use Class B8 (storage and distribution) including ancillary offices, associated hard and soft landscaping, parking, access and ancillary works. You can view the application and details of the report [here](#).

Construction of St. Modwen Homes Phase 1 to the west of the entrance of the development is now all complete except for the area around the site offices. St. Modwen Homes will be decamping from the site offices and going into new offices for the next phase of building.

Taylor Wimpey has made a lot of progress on their two phases on the north of Heathy Wood, with the Marketing Suite and show homes fully open and sales are going well on the first phase of housing with much of that plot sold or under offer.





DEVELOPMENT IN PICTURES





TRAVEL PLANNING

We are pleased to announce that Metrobus has diverted its 281 service via Heathy Wood.

This hourly bus service is operating Mondays to Saturdays between Heathy Wood, Copthorne Village, East Grinstead, Lingfield, Three Bridges, and Crawley.

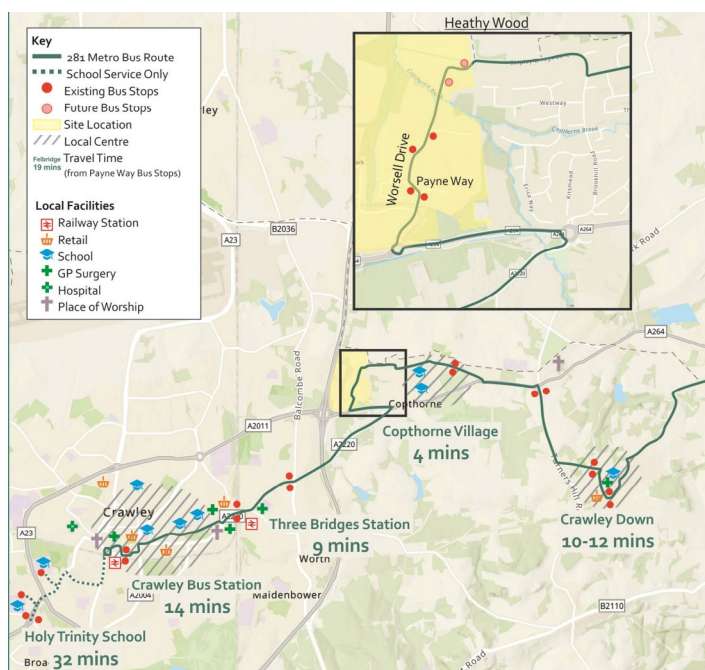
The bus stops at Heathy Wood are situated along Worsell Drive near Payne Way and Langridge Way. Residents are encouraged to please take the opportunity to try the service.

To make it even easier to travel by bus from Heathy Wood, St. Modwen is providing each household with one sustainable travel voucher with the value up to £150 that can be redeemed for a 13 Week Metrovoyager, valid on all Metrobus services (worth £296!). Whether you use it to go to the beach or to get to the office, the ticket can be used as many times as you wish for 13 weeks! Heathy Wood residents will find information on how to apply for Travel Vouchers in the Travel Pack.

More information on the bus service can be found at:
www.metrobus.co.uk/august-service-update.

You can view the full Heathy Wood Travel Pack here:
<https://www.heathywood.co.uk/wp-content/uploads/2022/07/heathy-wood-travel-pack.pdf>

Any questions? Just email the Travel Plan Co-ordinators at HeathyWoodTPC@stantec.com and they will be more than happy to help you with any questions you may have.





HEATHY WOOD
COPTHORNE

CHRISTMAS CAROLS & PREIM POP UP

Christmas Carols Thursday 8th December 6:00-7:30pm

Join us for a fun, festive evening and meet your neighbours on Thursday 8th December. From 6:00pm there will be mulled wine and soft drinks available, as well as mince pies - all on the house!

The Copthorne Church Choir and Copthorne Silver Band will be playing some of your favourite Christmas Carols from 6:30pm, so wear warm clothes, warm up your voices and come and have a festive time with your community. Catch the Copthorne Church Christmas Choir all around the area this December - check the website for times and details! www.copthornechurch.org/220/Carols-Around-Copthorne-Village



Preim Pop-Up - Thursday 8th December 4:30-6:00pm

Alongside the Heathy Wood Christmas Event, the Preim Ltd Estate Manager, Simon New, will be in attendance with a pop-up surgery where he can answer any management company queries that residents may have. The pop-up surgery will take place from 4.30pm and there will be a Preim Gazebo in the carpark opposite the Homebuyers Hub, where Simon can be located.

Simon has also confirmed that the annual residents meeting has provisionally been booked w/c 30th January 2023. The confirmed date will be relayed to residents via the official invite issued in December. There will be a written update issued by Preim soon to confirm on-going handovers that are being targeted for completion by the end of 2022.

SHARE YOUR STORY

Stories help to fill the gap between us. We would love to share good news about the Heathy Wood and its



St. Modwen invites you to a neighbourly Christmas Event

Join your community for Christmas Carols around the Christmas Tree

THURSDAY 8 DECEMBER
6:00-7:30PM

**CHRISTMAS CAROLS
SILVER BAND
MULLED WINE
MINCE PIES**

OUTSIDE THE HOMEBUYERS HUB
Heathy Wood, Copthorne, RH10 3RX



ST.MODWEN




HEATHY WOOD
COPTHORNE

Celebrate Christmas
Carols around Copthorne
with St John's & The Copthorne Silver Band

Saturday 3rd Dec
| 5pm - The Copthorne Green
(to celebrate switching on the lights!)

Thursday 8th Dec
| 6.30pm - Heathy Wood (Worsell Dr / Barbour Dr junction)
| 7.15pm - Brookside / Bridgelands junction

Thursday 15th Dec
| 6pm - Francis Court
| 6.30pm - Knowle Drive (halfway)
| 7.15pm - Church Lane (near Akehurst Close)



surrounding community, so if you have your own story to tell, contact us on info@heathywood.co.uk.